



South Coast Rail

Old Colony Planning Council Joint Transportation Committee

.....
March 2022

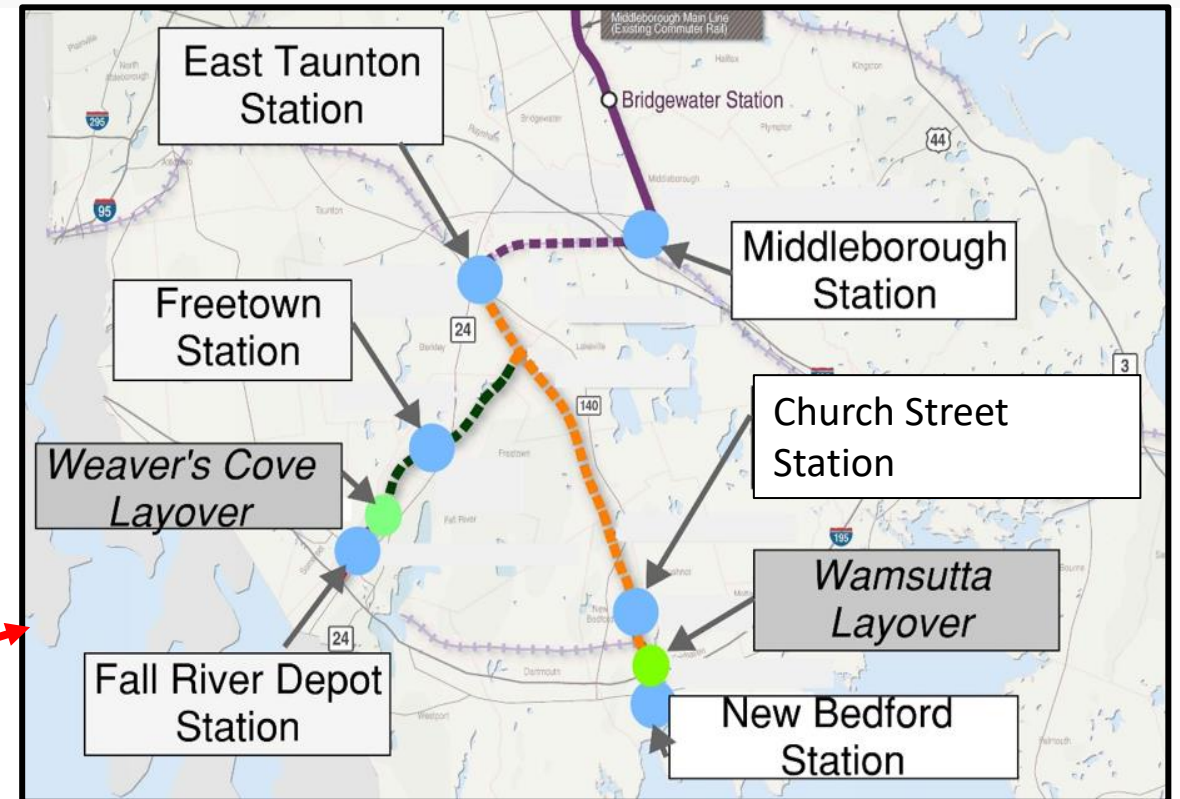
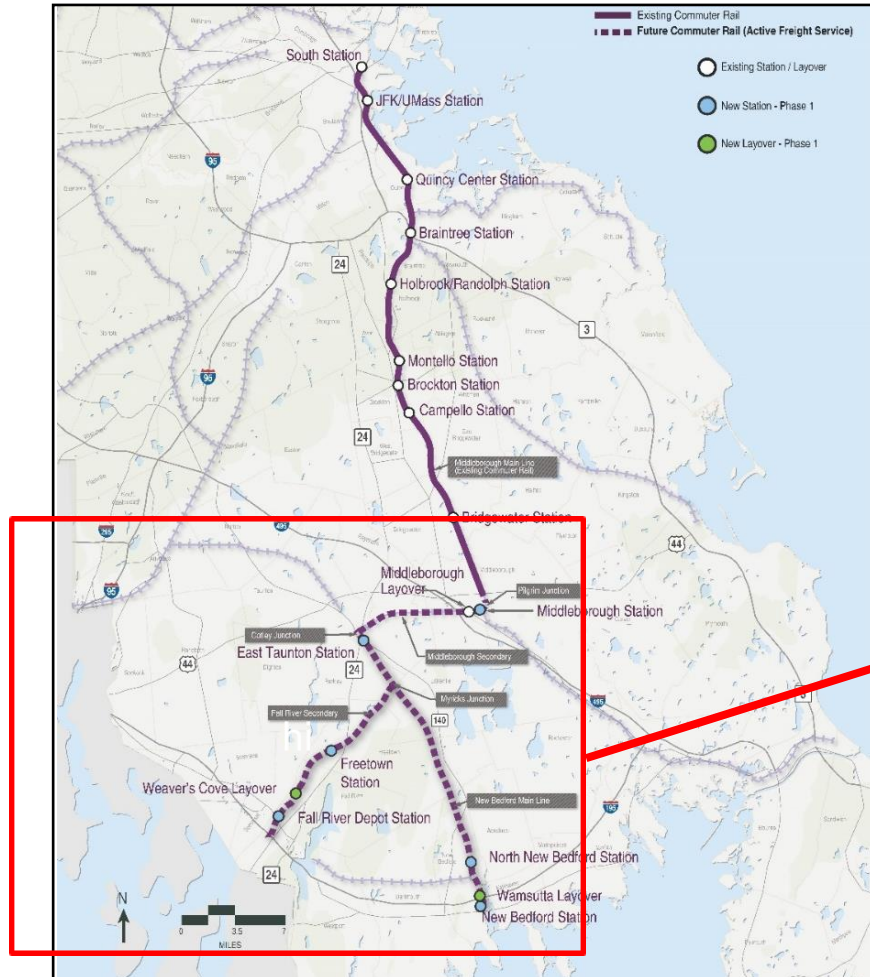


SCR is on Track!



- SCR Phase 1 is on time, on budget, and fully funded
- Fall River Line contract is on schedule at 40% completion (FRS)
- The Middleborough Secondary/New Bedford Main Line/Signals contract is on schedule at 20% completion (MS/NBML)
- Construction is furthest along at the Fall River Depot and Freetown Stations: footings, station platform foundations, walls and bridges and culverts are visible
- SCR anticipates reaching the midpoint of construction in Spring 2022 and Revenue Service is anticipated for late 2023

Phase 1 Stations and Layover Facilities



- New construction: six stations and two layover facilities

2021 South Coast Rail Accomplishments



- By last quarter 2021, the two contracts had completed approximately \$155 million of work
- SCR completed Early Action procurements of Special Trackwork and Other Track Materials, replaced 44 culvert; replaced 4 bridges; and completed cleaning and drainage improvements along the MS/NBML and FRS
- ROW tree canopy was cleared and track work completed from Myrick's Junction to Adams Lane in Berkley

On the Fall River Secondary

- Completed 5 of 9 bridges; 6 of 11 culverts; and 10 of 10 grade crossings (except for some final paving), and laid 5 of 12.1 miles of track



SCR work crews at Fall River Depot

2021 Accomplishments *Continued*

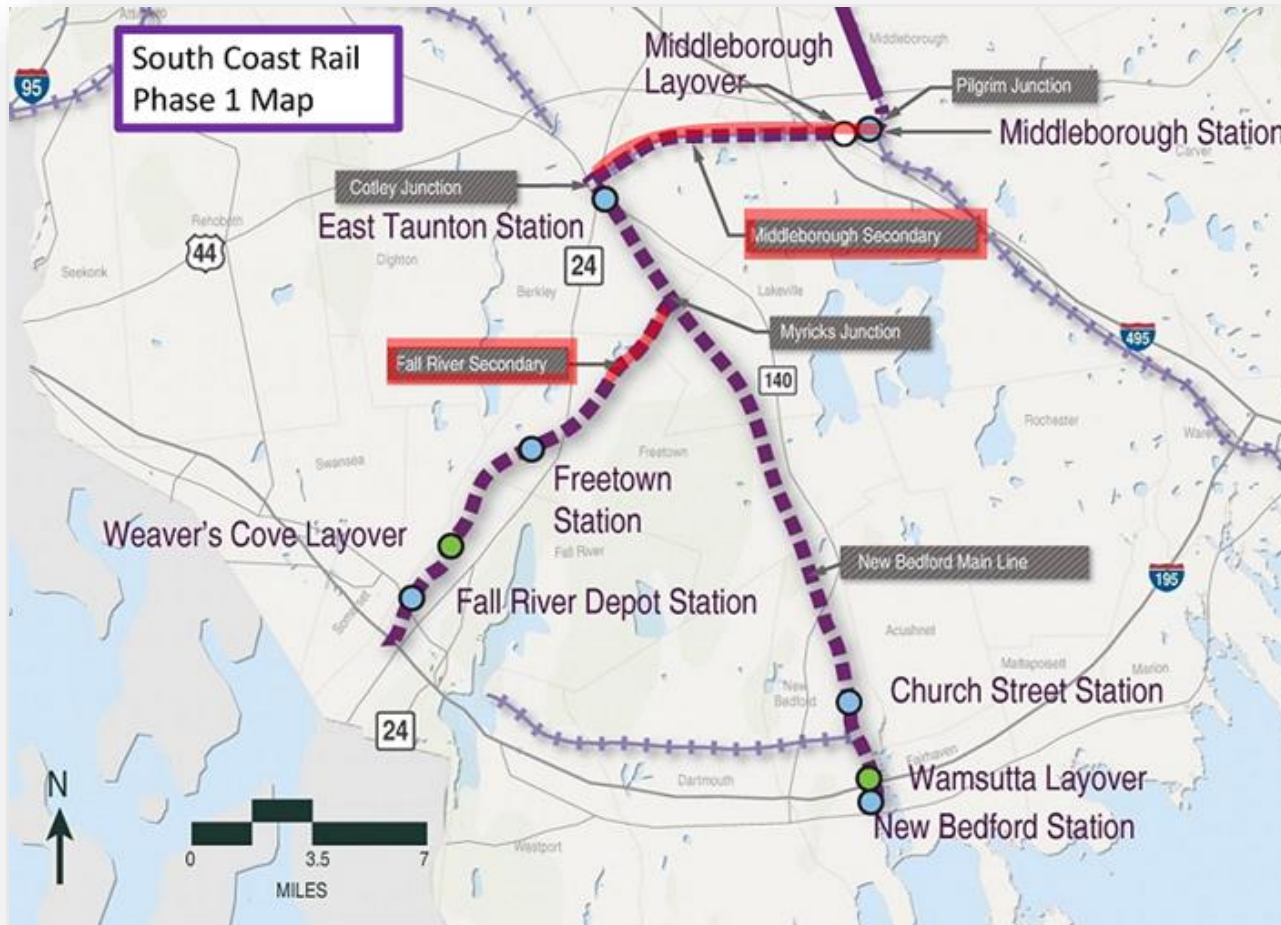


Installation of sheet piles

On the New Bedford Main Line/Middleborough Secondary

- The ROW tree canopy was cleared and significant track laid from Pilgrim Junction to Cotley Junction
- All grade crossings along the Middleborough Secondary are nearly completed
- Work continues along the ROW from north to south: 4 of 11 culverts are completed, 5 of 18 grade crossings completed, and 5 of 24.1 miles of track laid
- SCR's soil management program reuses significant fill quantities and complies with DEP and EPA requirements and agreements


Major Construction Elements (Next Quarter)




- Contractors will install 6-foot fencing (chain link) at locations along the Middleborough Secondary Line and Fall River Secondary Line, moving to other locations as they progress
- Fencing is placed to enhance safety and minimize trespassing on the railroad right-of-way



Station Elements



**East Taunton Station**

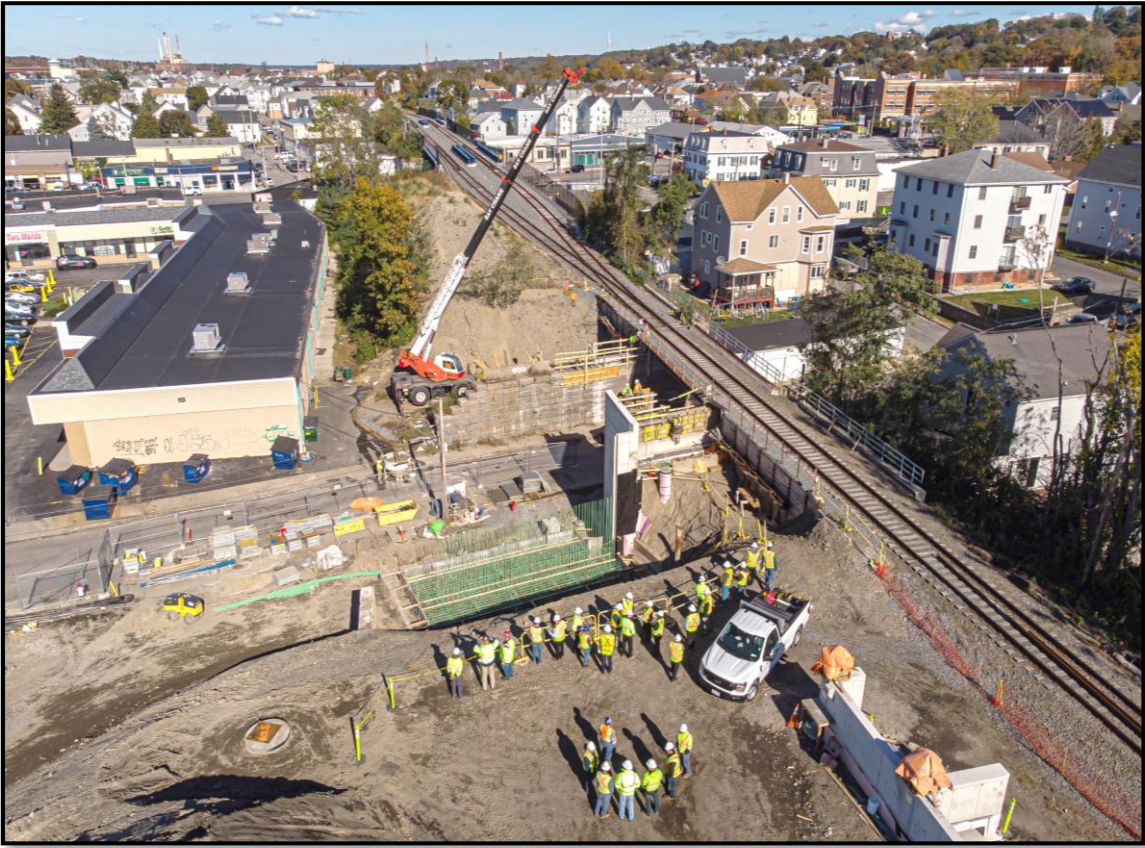
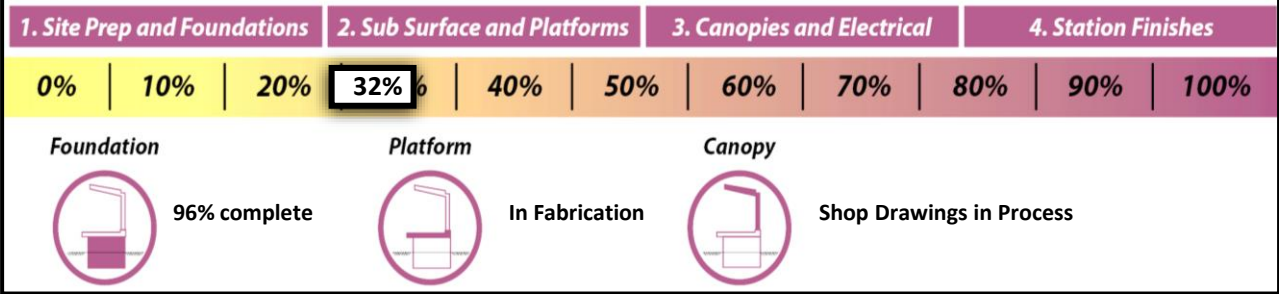


| Vehicular Parking Spaces | Bicycle Storage (covered) | Rideshare Pick-up/ Drop-off Area | Accessible and EV Parking | Platform Length | # Canopies |
|--------------------------|---------------------------|----------------------------------|---------------------------|-----------------|------------|
| 387 | 22 | Yes | Yes | 800' | 4 |

**South Coast Rail Phase 1**
Coming late 2023

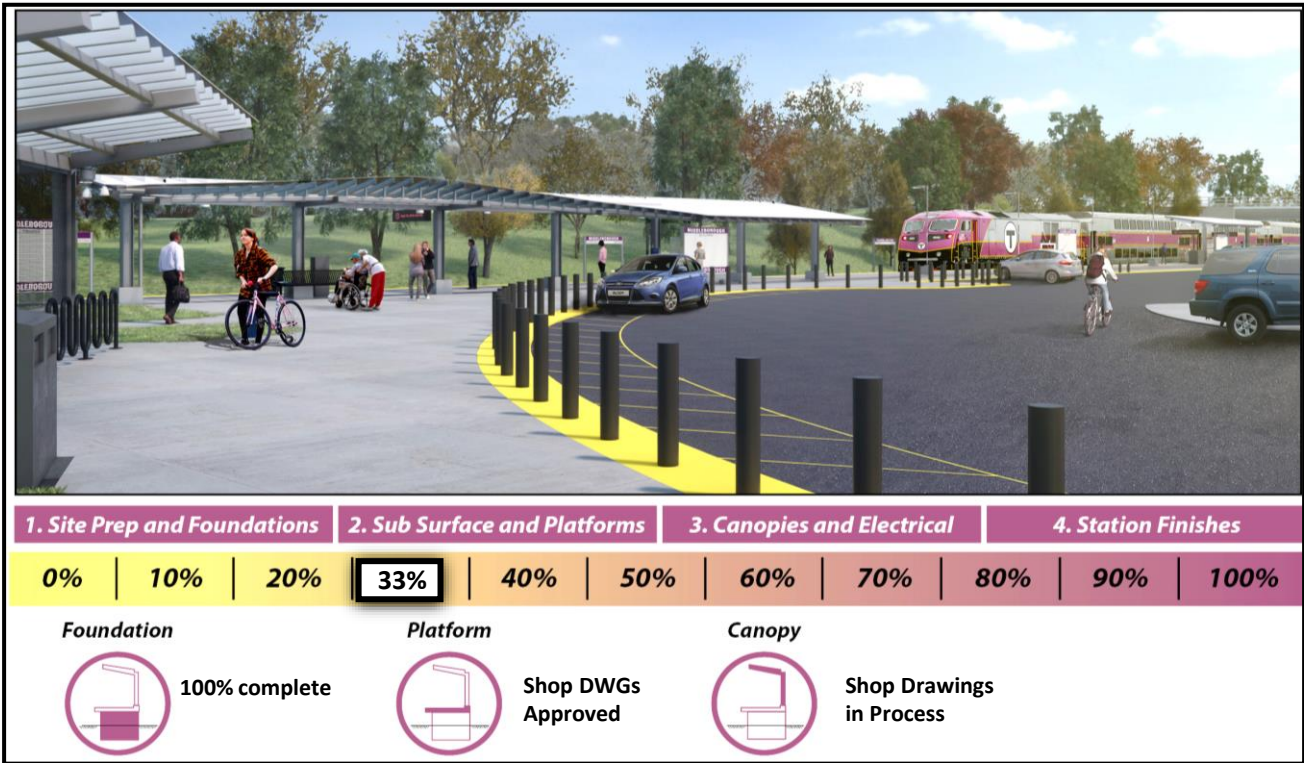
- 800-foot platform, fully accessible, with a canopy or canopies
- Bicycle parking; accessible and EV parking
- Parking, size depends on location
- Bus stop and drop-off spaces
- Landscaped areas using native plants
- New signal systems and pedestrian improvements at many sites

Fall River Depot



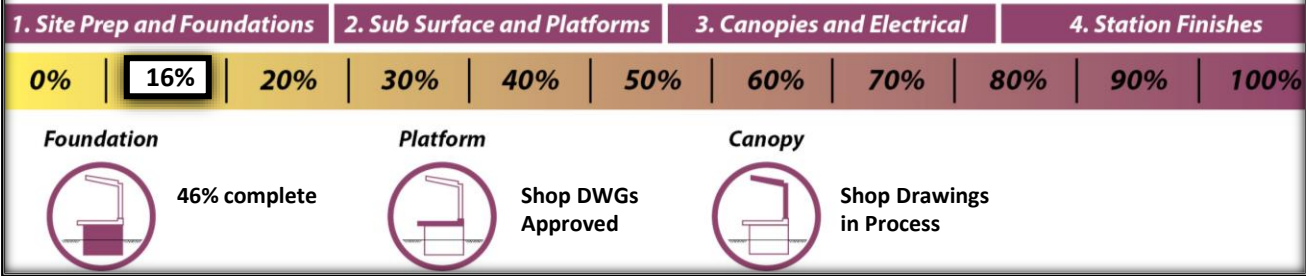
Fall River Depot November 2021

Middleborough Station



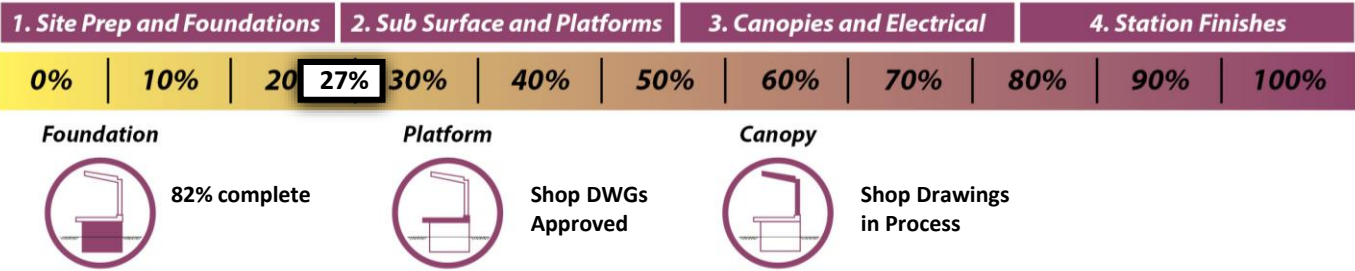
Middleborough Station

Church Street Station, New Bedford



Church Street platform walls formwork and reinforcing steel, December 2021

Freetown Station



Freetown Station

East Taunton Station – Center Platform

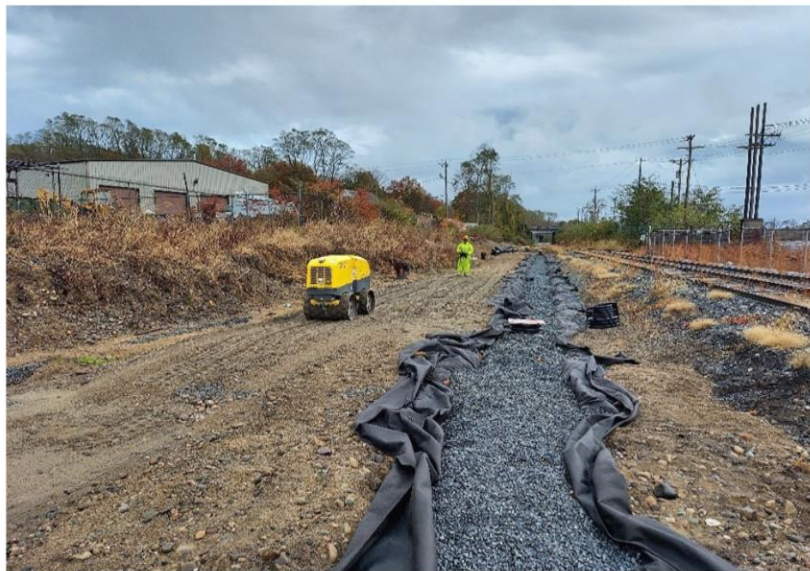


East Taunton Station is a center platform with stairs, ramps and elevators – the only one of its kind

Weaver's Cove Layover Facility



View of signal conduit routing



View of under drain work along future yard track alignment (left); crew building rising (right)

- Weaver's Cove has received 7,000 cubic yards of excavated soils from FRS and MS/NBM
- Soils placed to support site work and drainage – soils need to settle to support the storage tracks
- Crew building is under construction



What's Coming in 2022



In Berkley, Freetown and Fall River

- Install fencing and retaining walls from Adams Lane to Forge Road
- Prepare pads for the signal houses along the ROW
- Continue station construction in Freetown and Fall River
- Continue track replacement
- Install soldier piles and erect steel girders at Turner St. Bridge in Fall River



From Middleborough to Taunton

- Continue station construction: Middleborough, East Taunton, and Church St and New Bedford Stations
- Trackwork will include installing ballast, ballast mats and turnouts at Cotley and full reconstruction at Middleborough Ave.
- Install soldier piles and sheet pile walls along the Middleborough Secondary and New Bedford Main Line
- Install drainage and electrical duct banks and excavate to construct crew building at Wamsutta Layover

Anticipated Operations



26 trains will operate on the Middleborough Secondary each weekday when Phase 1 begins service, two more than the current 24 to Middleborough/Lakeville

- 13 trains inbound and 13 trains outbound
- 12 of 26 trains will operate during peak periods, 6 inbound and 6 outbound

Result: a train will pass by approximately every 45 minutes during peak periods, and approximately every 1.5 – 2 hours during off-peak periods

The MBTA has not determined the fare schedule at this point



Vehicle Procurement

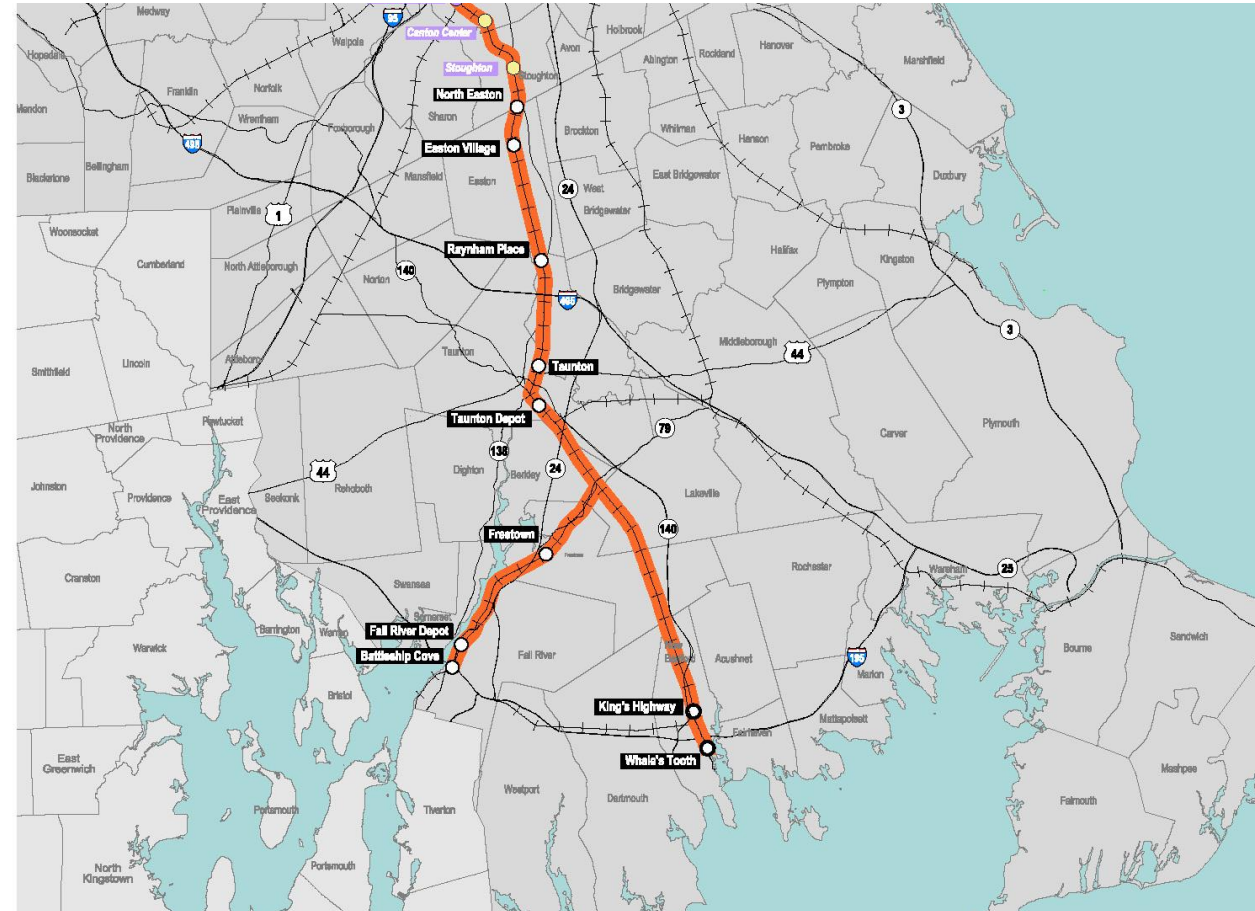


- SCR Team is monitoring progress of delivery of 16 Bi-Level Coaches, with four pilot coaches in factory testing
- The first batch of coaches is en route from South Korea and anticipated to arrive in Wareham in late Spring 2022
- Production is currently on schedule to support SCR Physical Crew Testing mid-2023
- MBTA Railroad Ops will add two locomotives to its fleet to support SCR operations

Full Build



- The Full Build will travel from Boston to Stoughton and continue south before splitting to reach Fall River and New Bedford
- The southern triangle alignment is under construction in Phase 1
- The Full Build is currently in the preliminary design phase
- It presents challenges related to wetland impacts, complex engineering, electrification and cost
- An anticipated schedule and service start date will be developed as design advances



Community Outreach



Project Website & Email

- mbta.com/projects/south-coast-rail
- SouthCoastRail@dot.state.ma.us

Site Visits and Community Meetings

- SCR team meets with residents, businesses, and elected officials to discuss issues and update stakeholders

Construction Hotline

- Construction-related issues are received on the hotline at 617-222-4099
- Hotline answered Monday – Friday, between 7:00am and 3:30pm by contractor staff; callers can leave voicemail outside of hotline hours that will be answered by contractor staff on the next business day

Weekly Construction Updates

- Construction updates issued weekly to more than 4,500 subscribers
- Abutters directly notified of upcoming 24-hr/day work periods with SCR flyers



Example of traffic impacts from a SCR e-blast